

*CENTERING THE
LIBRARY IN
CAMPUS WIDE
CONVERSATIONS
ON AI*

DESIGNING AND DELIVERING AN
INAUGURAL AI WEEK:

JUSTIN ELLIS & LI ZHANG

GEORGIA TECH LIBRARY

GALILEO CONFERENCE

APRIL 14, 2026



*HOW IS YOUR LIBRARY
ENGAGING IN THE
CONVERSATION
AROUND AI?*





LIBRARIANS, CAMPUS FACULTY, & AI

Academic librarians possess experience in collaborating with researchers, practitioners, and faculty across an array of fields.

Leveraging their interdisciplinary knowledge, they can work alongside computer scientists, legal experts, and other stakeholders to develop comprehensive and inclusive approaches to AI policy.

This ensures that diverse perspectives are represented in policy discussions and facilitates the development and utilization of AI technologies that prioritize...the common good.

Russell Michalak (2023)

PURPOSE

- What is the library's role in fostering collaboration and dialogue around AI?
 - How do you highlight the library as a key partner bridging disciplines?
 - AI impacts all fields (sciences to humanities)
- Planning an event: what is the scope and structure?
 - What outcomes do you hope to achieve?
 - What preparations do you need to make to engage with campus stakeholders, before and after?



WHY AN AI WEEK?

Librarians were already working with AI tools and incorporating them into workflows:

- AI research assistants integrated into database packages
- Technical services - metadata and analytics
- AI as part of information and data literacy – developing ethical use library modules
- Intellectual property questions



MOTIVATION

Recognizing that the library sits at the crossroads of:

- Teaching and learning
- Research support
- Intellectual property and scholarly communication
- Academic integrity and information literacy

As such, the library does play a key role in the campus conversation on AI policy.



- Developing proposals
- Engaging with in house event organizers
- Leveraging partners and stakeholders
- Space planning



SUMMER 2025 PLANNING PROCESS

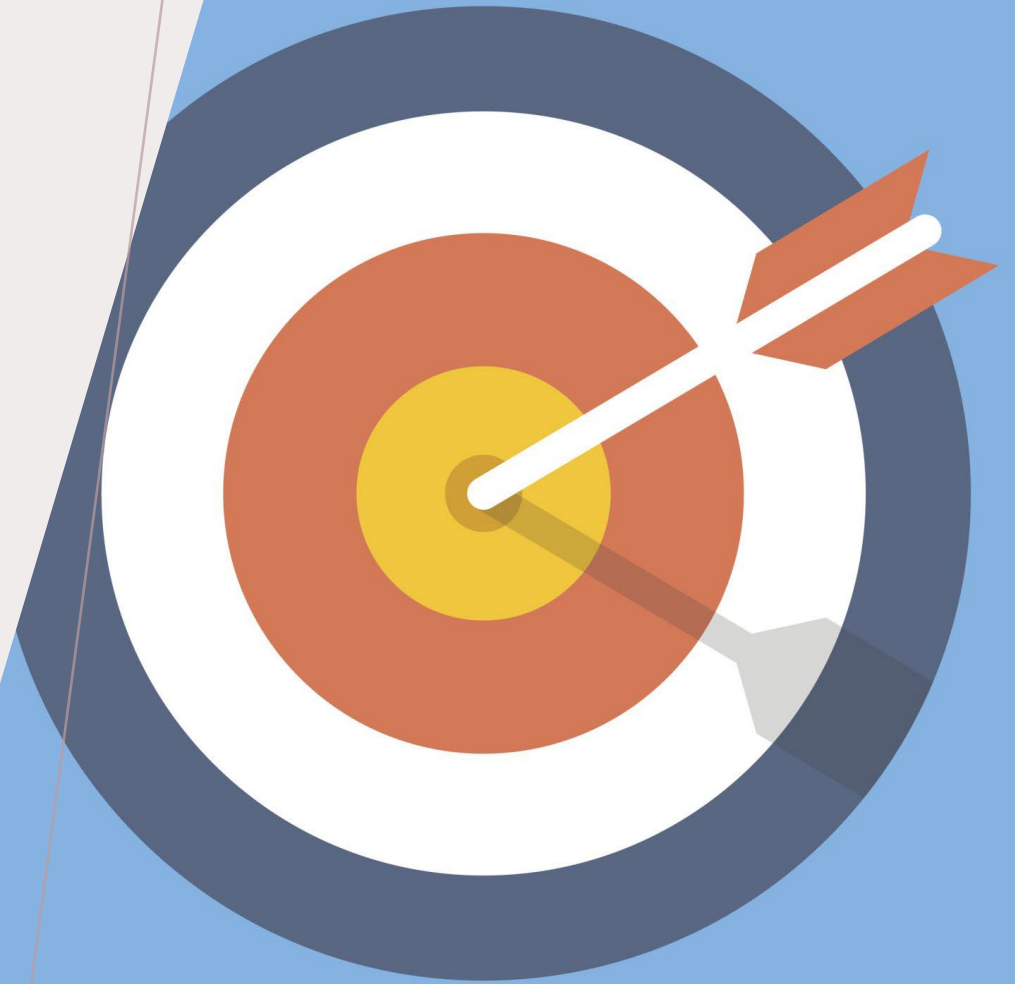
ESTABLISHING GOALS AND THEMES

Encourage cross-campus conversations around AI's impact on teaching, research, and IP.

Position the library as a neutral, expertise-center space for collaboration and innovation

Emerging Themes:

- Teaching with AI
- Research with AI
- AI and intellectual property
- Student facing AI literacy
- Academic Integrity



ENVIRONMENTAL SCAN

Part of the planning process entailed a review of current campus initiatives, key faculty & researchers, potential stakeholders and partners, and a review of prior library AI programming.

- Our environmental scan was key to defining our approach and the scope of what we wanted to cover.
- We discussed how AI tools were affecting our workflows, from student research inquiries, its impact on publishing, metadata, and additions to library databases and electronic resources.



Identify existing campus AI initiatives and faculty research groups.

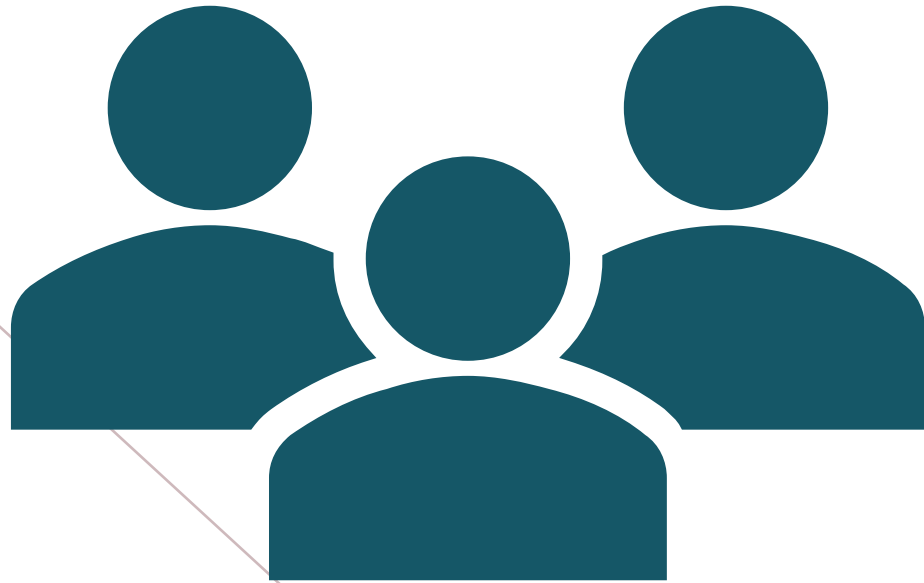


Collaborate with the Center for Teaching and Learning & leverage partner influence.



Review prior library programming on AI and metadata, publishing, and bias.

BUILDING OUT THE PROGRAM

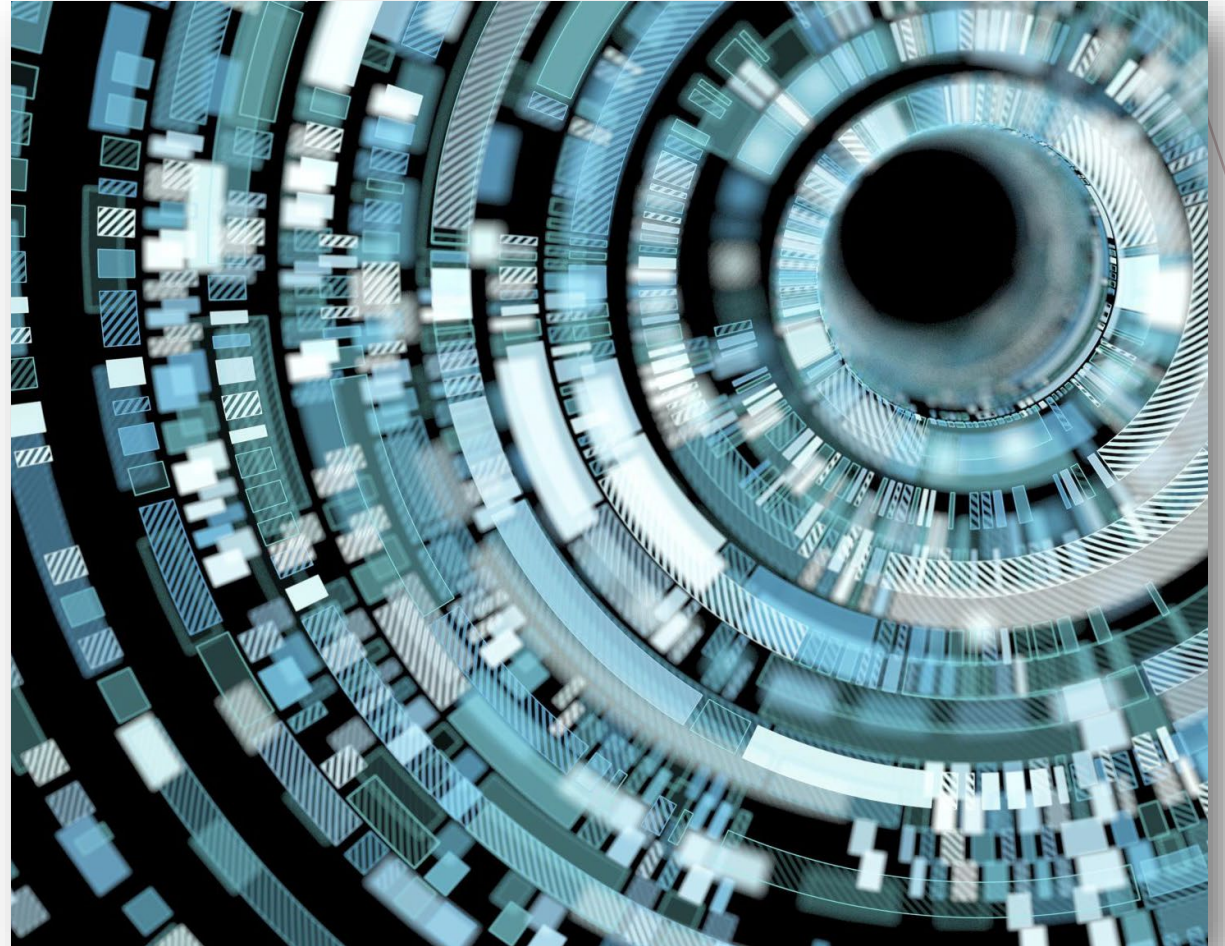


- Identify potential panelists from various disciplines
- Significant investment (time) – have backups
 - Inviting faculty before the semester
 - Planning around busy times on campus – convenient times for faculty.
 - Make sure students are on campus (mindful of holidays, midterms, etc.).
 - Leveraging faculty goodwill towards the library.
- Example: Faculty from the College of Computing, Public Policy, and the School of Psychology participated in the panel discussions.

AI WEEK 2025

Oct. 14 – 16, 2025.

- Harnessing AI Tools for Effective Teaching (moderator Dr. Vincent Spezzo)
- Enhancing Research with AI Tools (moderator Justin Ellis)
- Trademark Fundamentals
- Patents in the Age of AI (with guest IP attorney – moderator Li Zhang)
- Exploring AI Together for Study – Copilot and Adobe Firefly (Student centered – moderator Justin Ellis)





COMMUNITY ENGAGEMENT AND EVENT FACILITATION

- Make the library a community dialogue space, offering participants with a broader forum for discussion and exchange.
- Plan event logistics and promote event participation through social media. Engage campus networks and partners.
- Develop and refine panel questions.
- Facilitate panel discussions.

WHAT WE LEARNED

Cross-disciplinary themes

Shared information across departments about:

- Teaching use
- Research use
- AI and intellectual property
- Ethics of AI

Opportunities identified

- Continued collaboration with stakeholders
- Potential topics for future programs and events
- Areas of library resources or expertise to promote
- Connecting students to subject matter experts using AI in teaching and research across disciplines



A woman with short, curly brown hair, wearing glasses and a leopard print shirt, is shown in profile, looking upwards and to the right. She is standing in a library, with bookshelves filled with books visible in the background. The lighting is warm and focused on her, creating a contemplative atmosphere.

IMPACT ON THE LIBRARY

- Identify the library as a center for a more collaborative campus ecosystem
- Stronger engagement with campus community
- Opportunities to further develop cross departmental partnerships
- Ideas for innovative library programming

REFLECTIONS AND RECOMMENDATIONS

- Start early and co-design with faculty.
- Use the library's space to foster open conversation.
- Adopt a hybrid delivering format.
- Build iterative programming based on community feedback.



QUESTIONS?



REFERENCES

Russell Michalak (2023) From Ethics to Execution: The Role of Academic Librarians in Artificial Intelligence (AI) Policy-Making at Colleges and Universities, *Journal of Library Administration*, 63:7, 928-938.

DOI: [10.1080/01930826.2023.2262367](https://doi.org/10.1080/01930826.2023.2262367)

